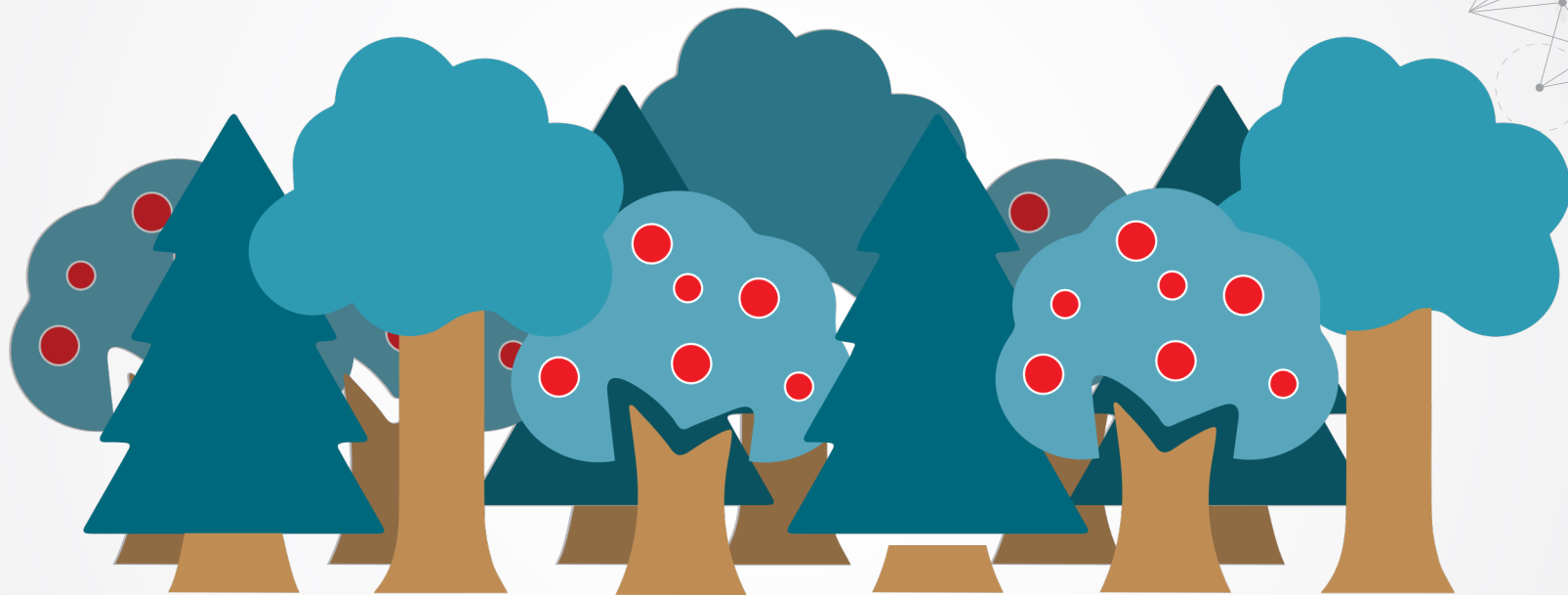




Interoperability:

The Intersection of Policy, Technical
Implementation and Business
Process Transformation

Seeing the Forest for the Trees

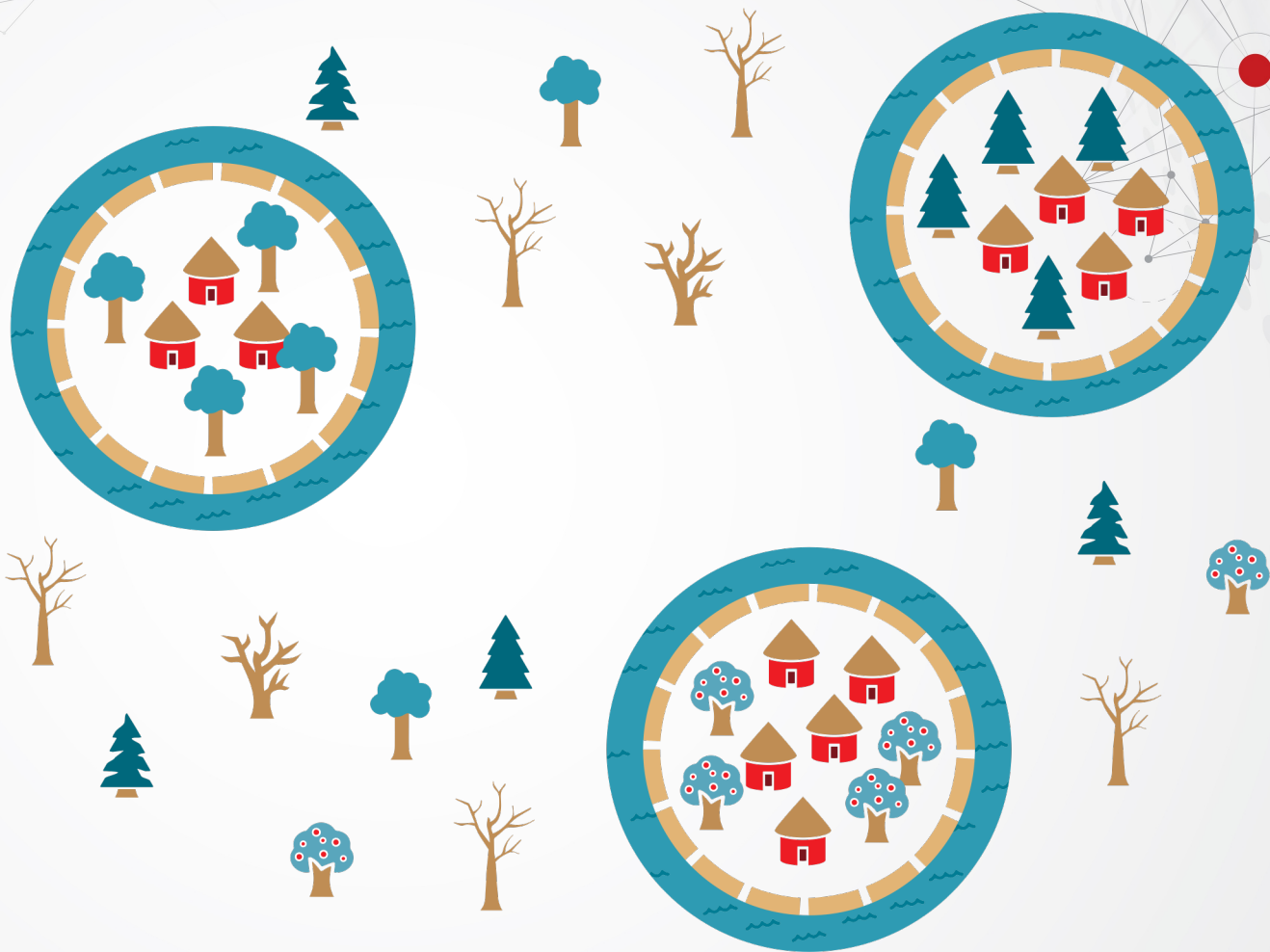




Myths of Interoperability

- If we just get these next rules in place Interoperability will just work
- Interoperability is something someone else in my organization does
- I just need to make my current workflows digital

What is the Bigger Picture When You Take a Step Back?



Increase in Federal Regulatory Data Transparency and Exchange



PROPOSED



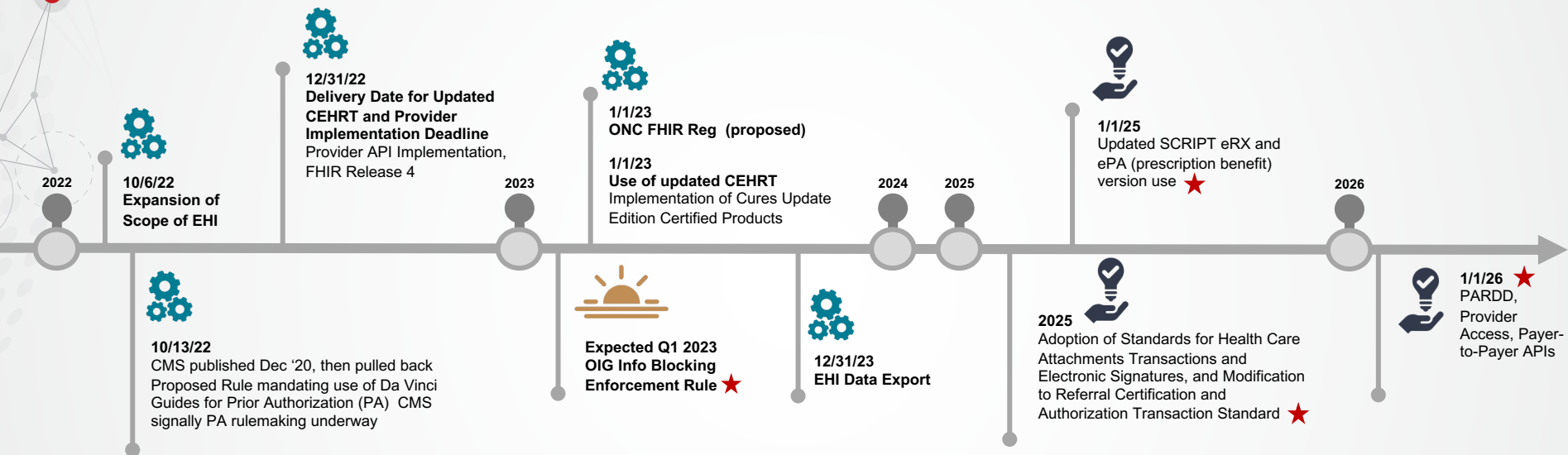
IN EFFECT



COMPLIANCE ENFORCED



ON THE HORIZON

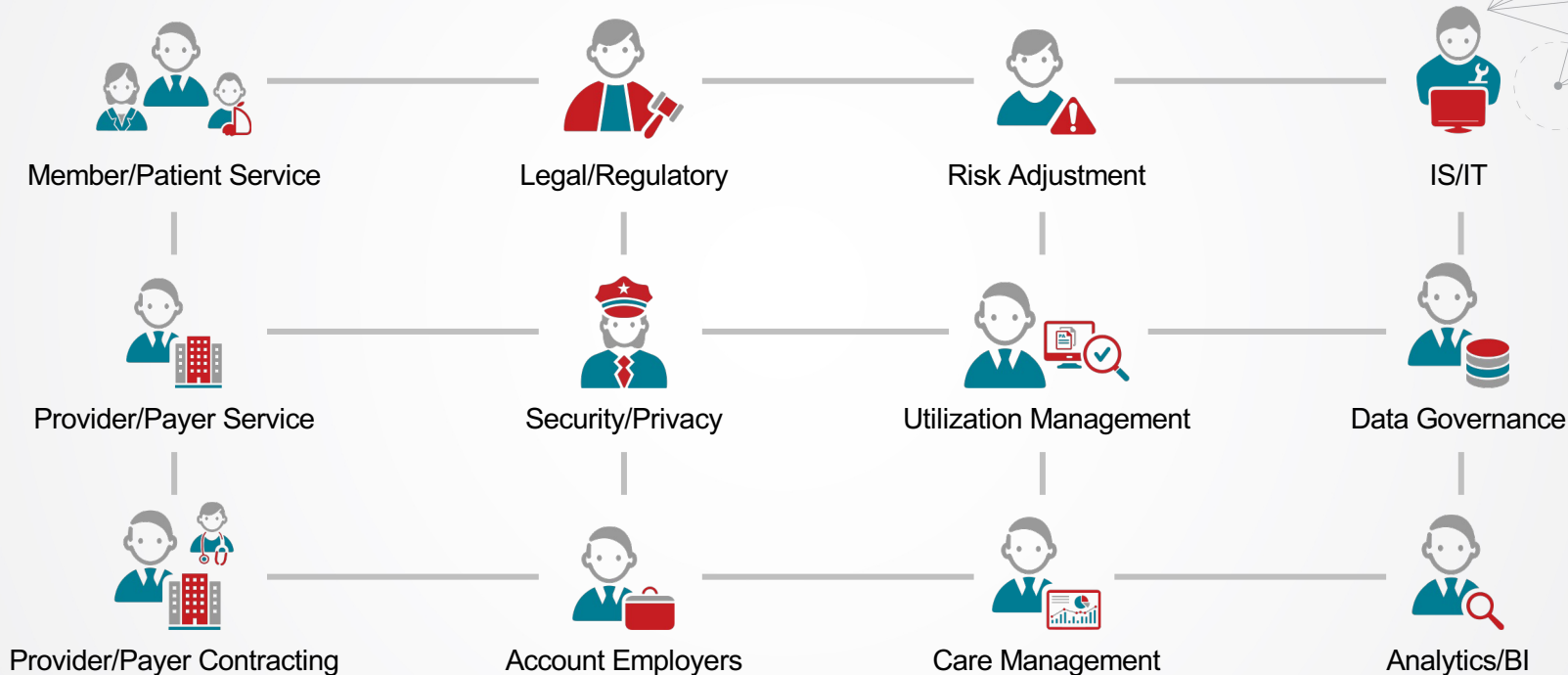


ON THE HORIZON:

- CMS Response to National Provider Directory RFI – **2023** ★
- ONC Proposed Rule – EHR Reporting; Voluntarily adopt and attest to TEFCA certification – **2026** RTPB and ePA (prescription benefit) CERHT ★
- Anticipating proposed changes in HIPAA privacy rules from OCR including how HIPAA begins to integrate FHIR **likely 2023**
- ONC - Establishment of Disincentives for Health Care Providers who Have Committed Information Blocking **Sept 2023** ★



Ensure Shift is Not Just a “Technology” Project



What We Are Doing Isn't New

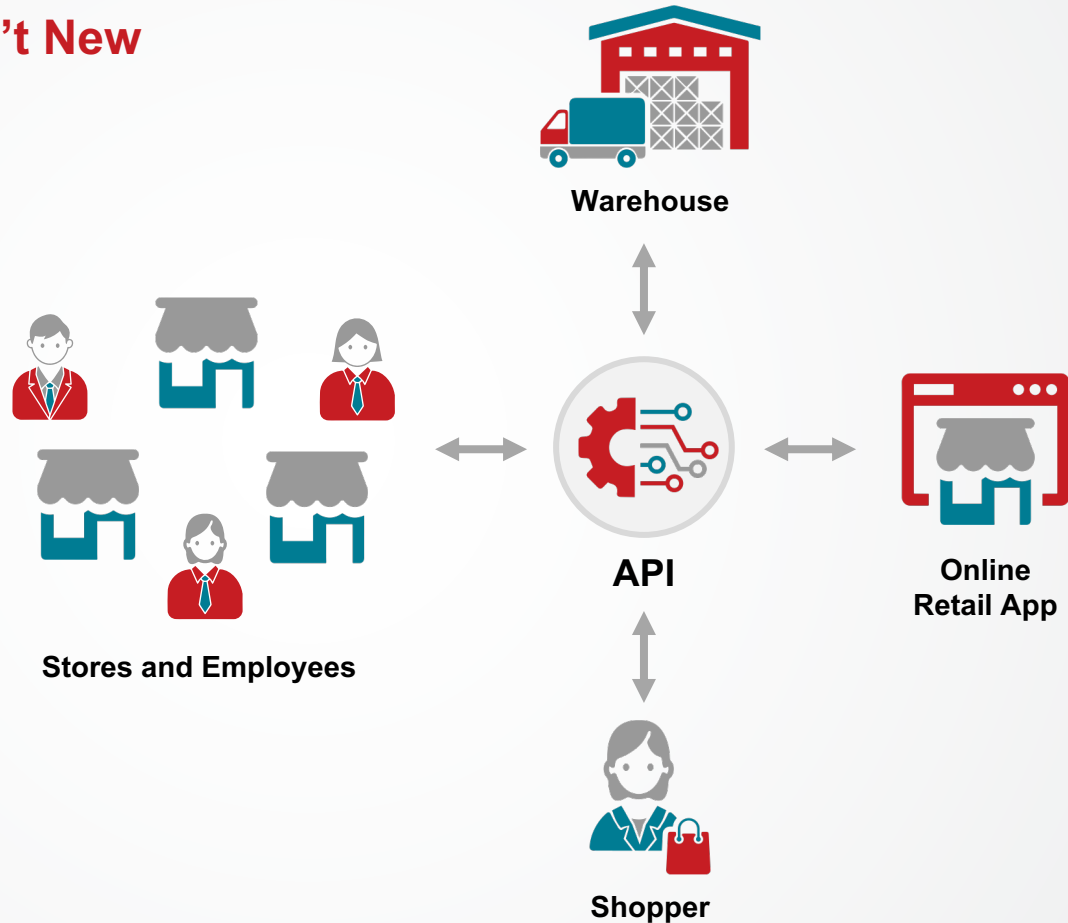
Same tools used to

Shop Online

Used inside Store
Employees

Allow warehouses to give
real time updates

Surface goods to search
engines



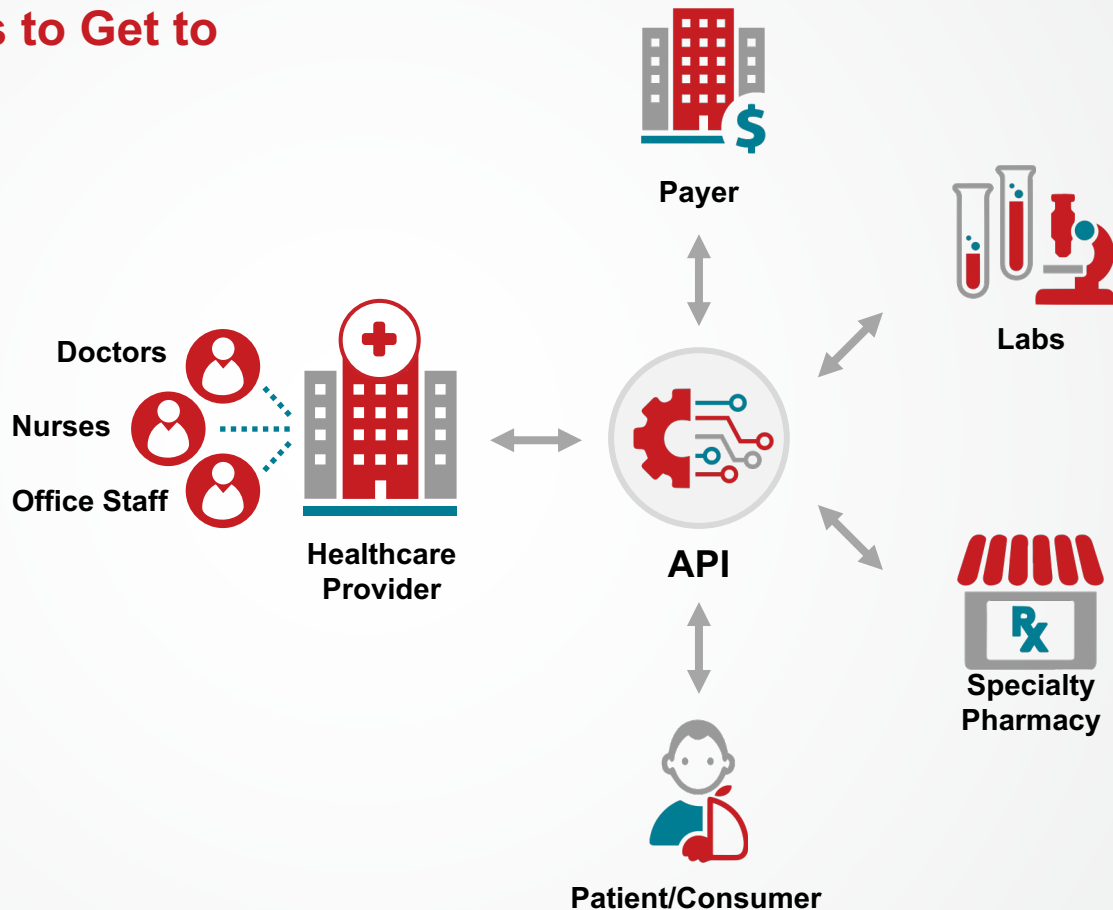
Breaking Down Silos to Get to the Speed of Life

Shift to APIs enables right minimal data, at the right time to the right partner

In or outside your organizational walls

In the workflow where you need, when it is actionable

Standards make it scalable



CMS – Proposed FHIR Standards and IGs

API INTEROPERABILITY STANDARDS

STANDARDS	PATIENT ACCESS API	PROVIDER ACCESS API	PROVIDER DIRECTORY API	PAYER-TO-PAYER API	PARDD API
USCDI at 45 CFR 170.213 (currently V1)	✓	✓	✓	✓	✓
FHIR Release 4.0.1	✓	✓	✓	✓	✓
HL7 FHIR U.S. Core IG STU 3.1.1	✓	✓	✓	✓	✓
HL7 SMART APP Launch Framework IG 1.0.0	✓	✓	✓	✓	✓
HL7 FHIR Bulk Access (Flat FHIR) IG v 1.0.0 STU 1	*	✓	*	✓	*
OpenID Connect Core 1.0	✓	✓	✓	✓	✓

RECOMMENDED IGs BY API

IMPLEMENTATION GUIDE	PATIENT ACCESS API	PROVIDER ACCESS API	PROVIDER DIRECTORY API	PAYER-TO-PAYER API	PARDD API
CARIN for Blue Button IG Version STU 1.1.0	✓	✓	*	✓	*
Da Vinci PDex IG Version STU 1.0.0	✓	✓	*	✓	*
Da Vinci PDex U.S. Drug Formulary IG Version STU 1.1.0	✓	✓	*	✓	*
Da Vinci PDex Plan Net IG Version STU 1.1.0	*	*	✓	*	*
Da Vinci Payer Coverage Decision Exchange (PCDE) IG Version STU 1.0.0	*	*	*	✓	*
Da Vinci Prior Authorization Support (PAS) IG Version STU 1.1.0	*	*	*	*	✓
Da Vinci Coverage Requirements Discovery (CRD) IG Version STU 1.0.0	*	*	*	*	✓
Da Vinci Documentation Templates/Rules (DTR) IG Version STU 1.0.0	*	*	*	*	✓

Business Transformation at Hand



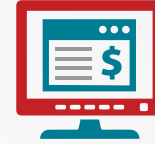
Improve Quality and Outcomes
by improving care in workflow
vs historical reporting



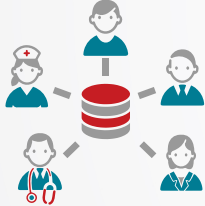
Identify and Improve Outreach
to At Risk Patients



Reducing Burden or
Automating Prior Auth



Creating Transparency on
Benefits and Coverage to
Members and Providers



Scale the Ability to Share this
information to internal and
partners at the right time to
make it actionable



Breaking down barriers to
access and removing bias to
improve equity in care

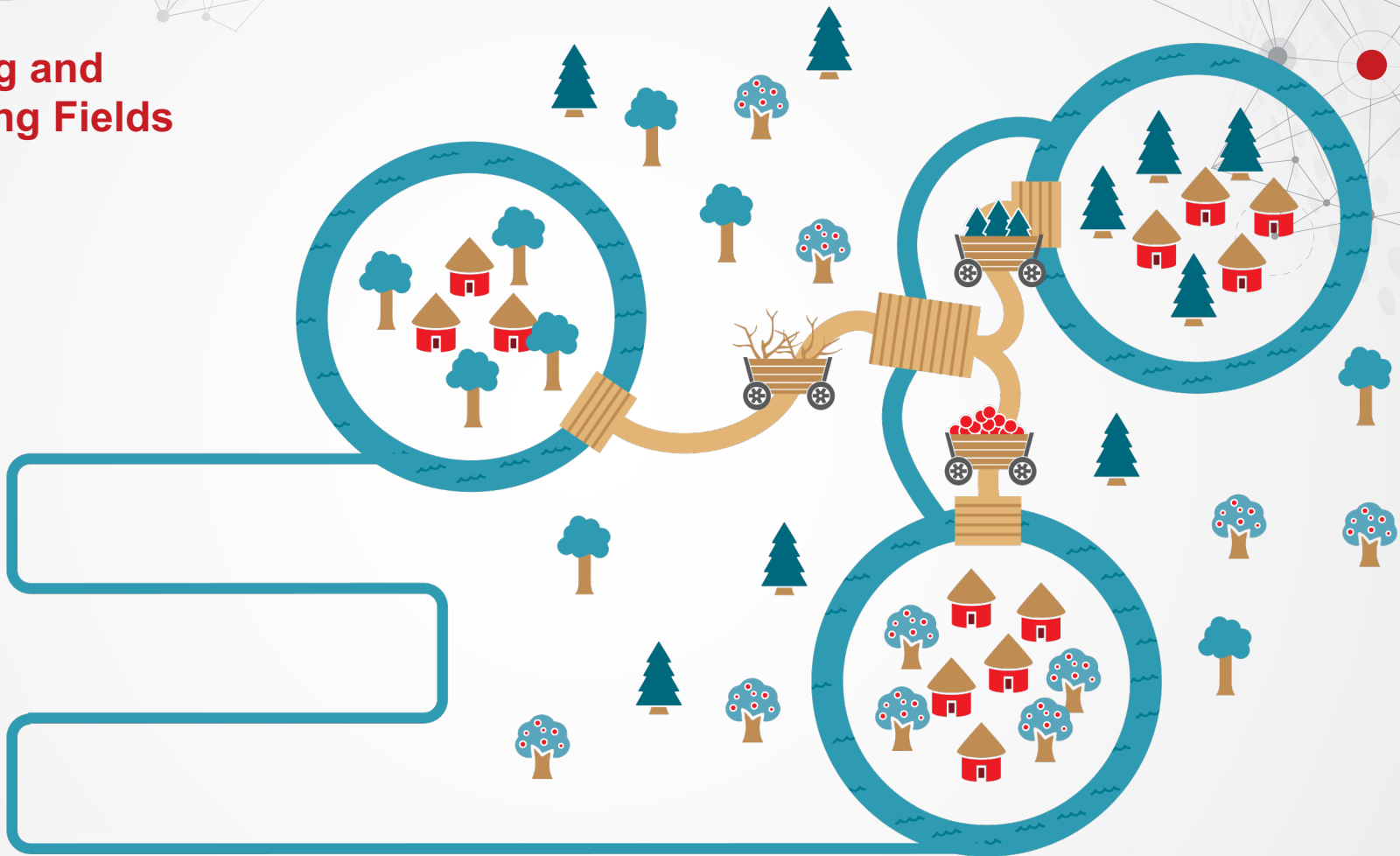


Enabling patients to control
and manage their own data



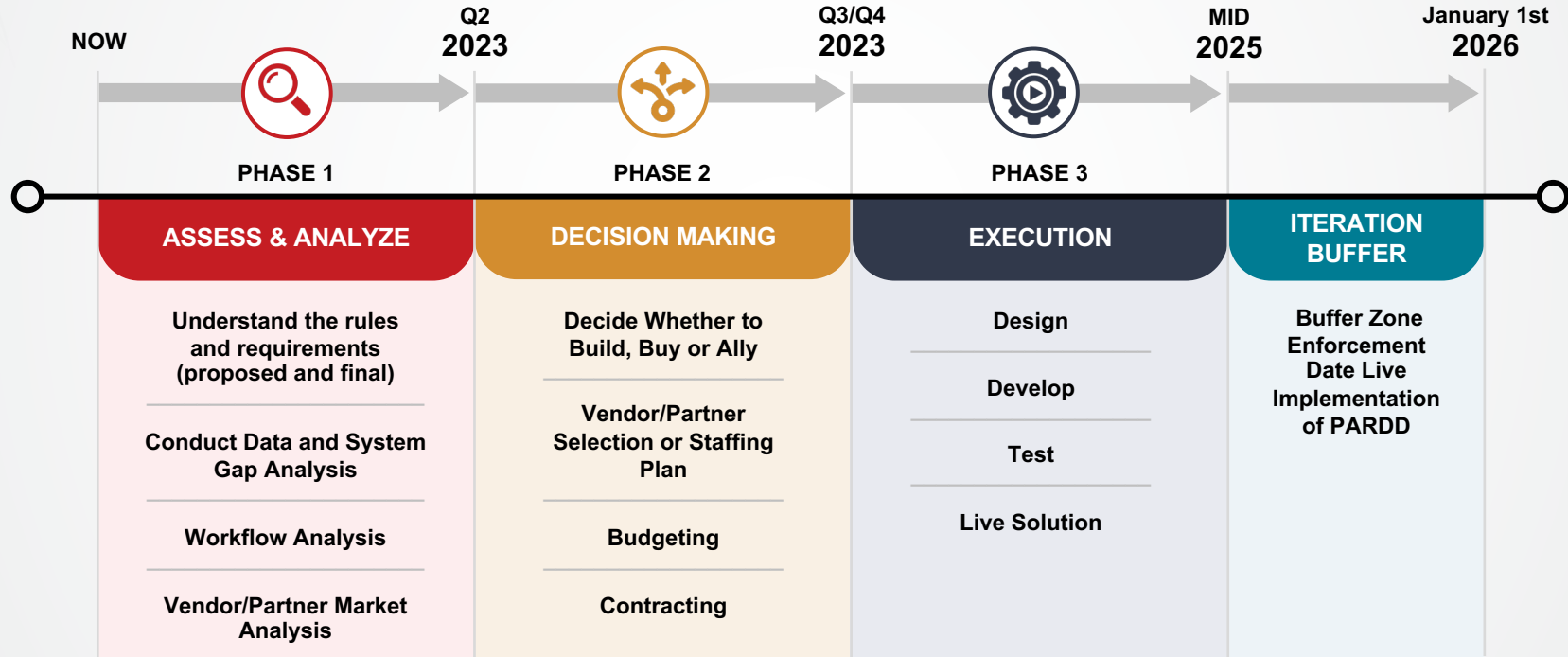
Ensure capture incentives for
the care provided

Farming and Readying Fields

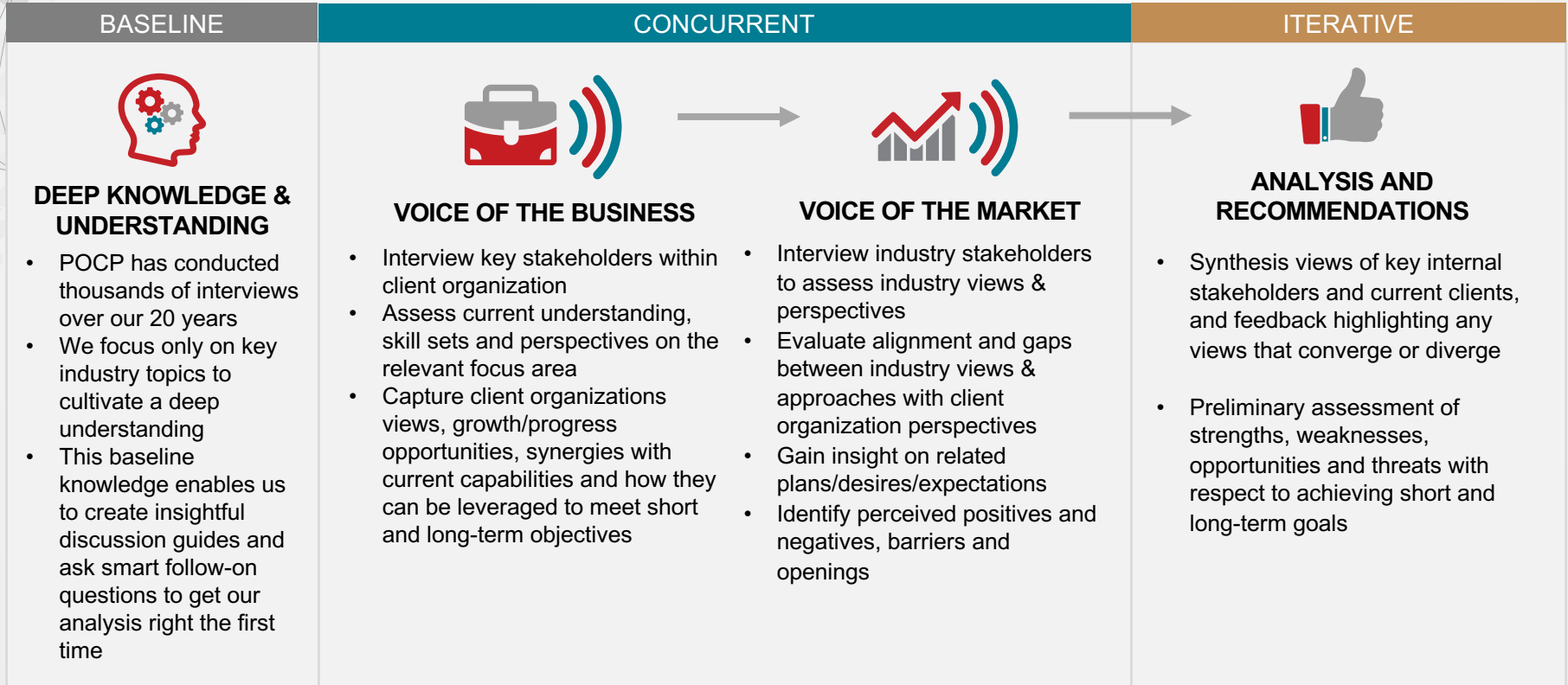


The Time is Now!

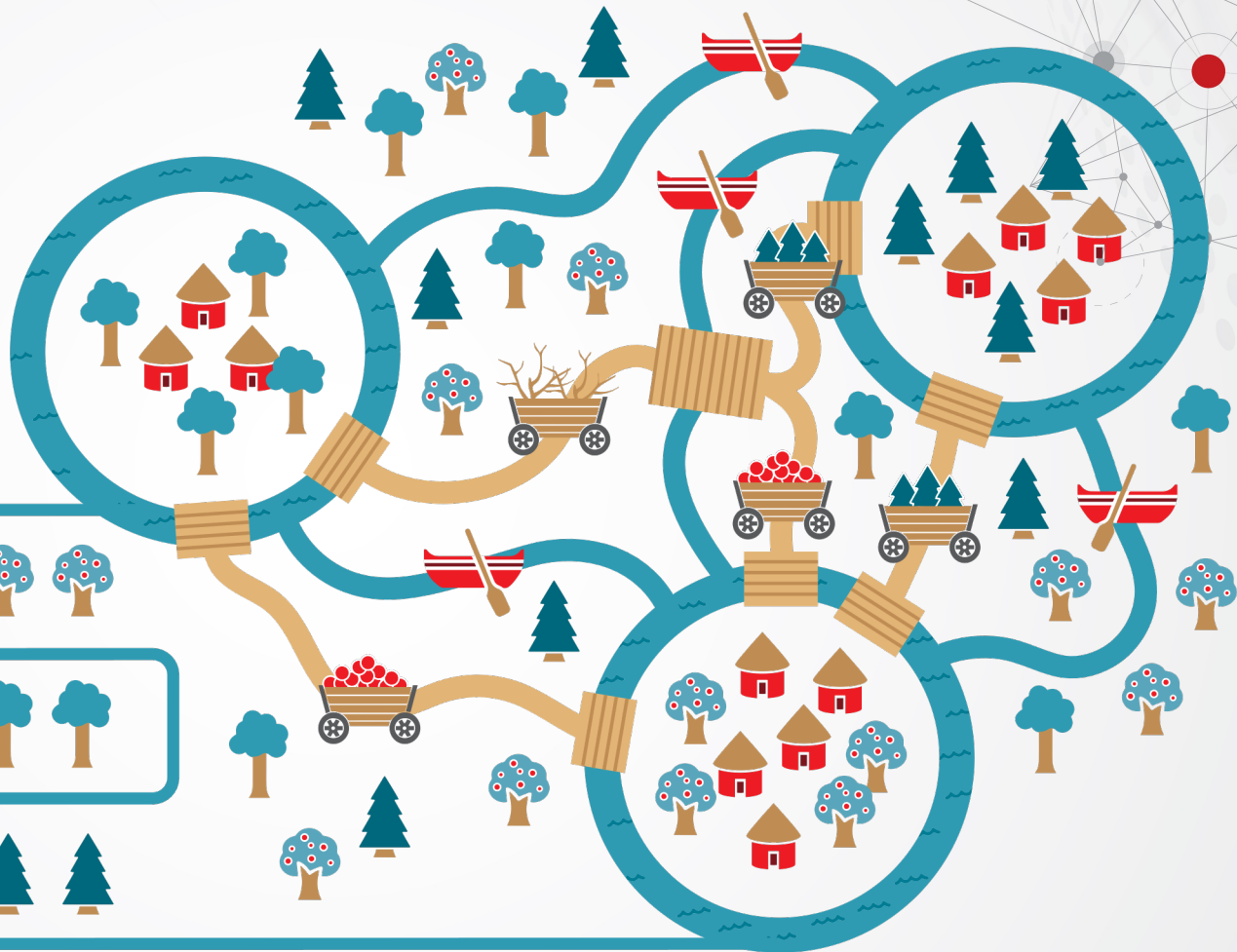
The CMS PARDD API Rule 1/1/2026 will be here before you know it!



Importance on Focusing on Overarching Business Challenges



Seeing the Forest for the Trees

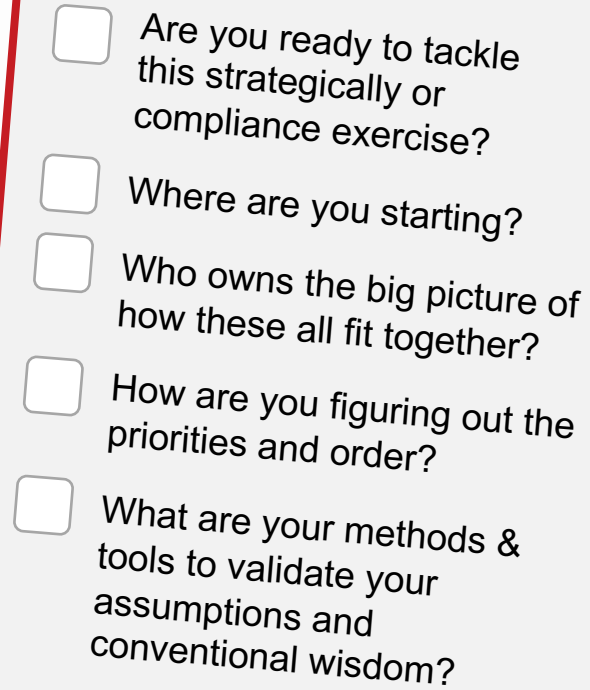


The Time is Now!

Thank You

Jocelyn Keegan
Payer/Provider Practice Lead
Jocelyn.keegan@pocp.com



- 
- A graphic of a clipboard with a red border and a blue clip at the top. It contains a checklist with five items, each preceded by an empty square checkbox.
- ☐ Are you ready to tackle this strategically or compliance exercise?
 - ☐ Where are you starting?
 - ☐ Who owns the big picture of how these all fit together?
 - ☐ How are you figuring out the priorities and order?
 - ☐ What are your methods & tools to validate your assumptions and conventional wisdom?